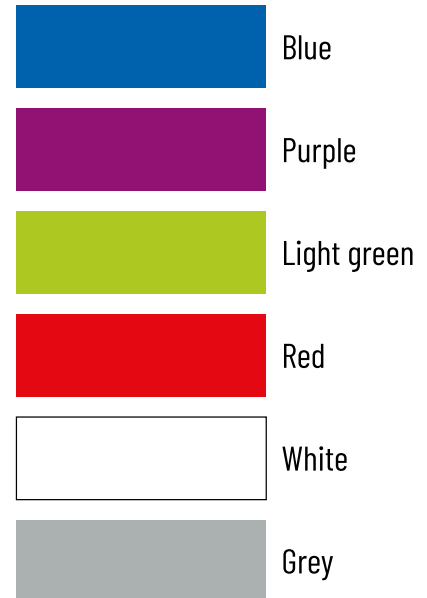
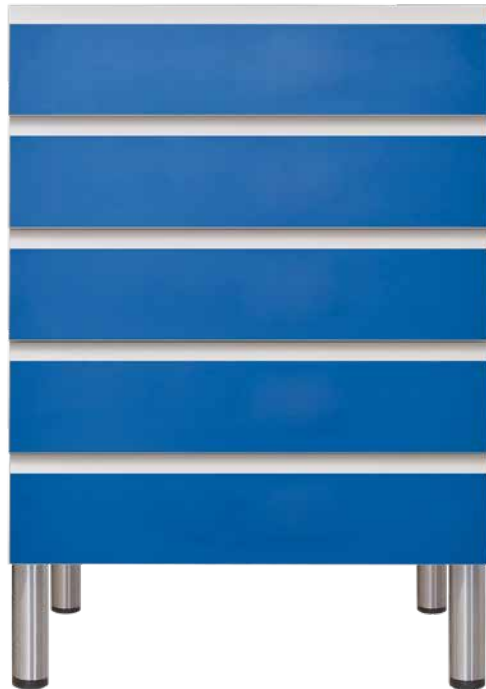


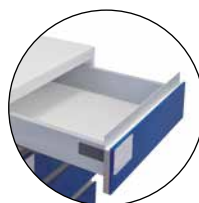
Technical data sheet

Reference: **60125**

Modular base cabinet



- Stratified panels with plasticized coating
- 5 drawers, 110% opening and soft closing.
Colours: white, grey, light green, blue, purple, red
- Aluminium edge profile handle
- Adjustable stainless steel legs



- Length: 60 cm
- Width: 65 cm
- Height: 85 cm
- Legs height: 15 cm
- Drawer front: 13,7 cm